



M.V. KOOLE 74

The KOOLE 74 is a general cargo vessel with a length of 73,95 meters with a width of 10,80 meters. She has a deadweight of 1.404 ton and serves a multitude of services. On the one hand she is the preferred way of transporting KMS equipment such as cranes, winches, oil spill response equipment and much more. On the other hand she is perfectly suitable of handling various waste and scrap materials and other general cargo.

| GENERAL | |
|------------------|---|
| Name | KOOLE 74 |
| Type of vessel | General Cargo Ship |
| Class | St. Vincent Class ✕ 100 A5 M E General Cargo ship ✕ MC |
| Flag | St. Vincent |
| Port of Registry | Kingstown |
| Year Built | 1969 |
| Callsign | J8RH6 |
| IMO Number | 7002605 |
| MMSI | 377901292 |

| DIMENSIONS | |
|---------------------|-------------------|
| Length Overall | 73,95 meter |
| Length Between P.P. | 67,99 meter |
| Breath Overall | 10,80 meter |
| Depth at Sides | 5,60 / 3,48 meter |
| Minimum Draft | 2,70 meter |
| Maximum Draft Laden | 3,66 meter |
| Minimum Airdraft | 19,50 meter |
| Maximum Airdraft | 21,50 meter |
| Deadweight | 1.404 tons |
| Gross Tonnage | 1.251 GT |
| Net Tonnage | 484 NT |

| CARGO CAPACITY | |
|------------------------------|---|
| Cargo Hold Dimensions | 41,50 x 8,10 x 6,50 meter (L x B x H) |
| Cargo Hatch Dimensions | 42,58 x 8,43 meter (L x B) |
| Cargo Capacity | 2.200 cbm in hold |
| DWCC S/W | 1.200 tons |
| Steel Scrap / Cargo Capacity | 1.200 tons |
| Containers | 27x 40ft Containers |
| Cargo Deck Load | 18,0 tons per m ² on the Tanktop (18mm) 1,2 tons per m ² on the Hatch Covers |
| Frame Spacing | 550 mm |

| NAUTICAL AND COMMUNICATION EQUIPMENT | |
|--------------------------------------|--|
| Sea areas | A1+A2+A3 |
| Radar system | 1x Furuno FAR 2127 1x JRC NWZ 173 - JMA -5312-6HS |
| SSB | NSR NHR-1500 MF/HF |
| Chart system | 1x ECDIS 900 |
| Autopilot | NaviTron NT888G |
| Inmarsat C | 2x Furuno Felcom 18 |
| GPS | NSR GNSS Navigator NGR-3000 |
| AIS | SAAB R4-AIS Shipborne Class A |
| Gyro Compass | Non/ Sattelite Compas |
| Navtex | NSR Navtex Receiver NVX-3000 |
| Dopplerlog | Furuno RD-33 |
| V-Sat | Intellean |

| PERFORMANCES | |
|----------------|----------|
| Maximum Speed | 10 knots |
| Cruising Speed | 9 knots |
| Economic Speed | 8 knots |

| PROPULSION SYSTEM | |
|--------------------|---|
| Main Engines | VEB Schwermaschinebau "Karl Liebknecht" 8 NVD 48 A-2-U |
| Total Power | 441 kW = 600 BHP |
| Propulsion | Single FP Propeller + Becker Flaf-Rudder |
| Propellor Turning | Right propeller |
| Propellor Diameter | 1230 mm |
| Bowthruster | 120 kW Jastram, Driven MWM 8 Cly. Aux eng. |

| AUXILIARY EQUIPMENT | |
|---------------------|-----------------------------------|
| Generator sets | 2x DEUTZ F6L912 / 1x DEUTZ F3L912 |
| Capacity | 2x 80 kVa / 30 kVa |
| Hydraulic set | HATLAPA Ueterson Holstein |
| Fresh Water Maker | N/A |
| Gasoil separator | 1x Desmi f.o seperator 2,0m3 p.u |

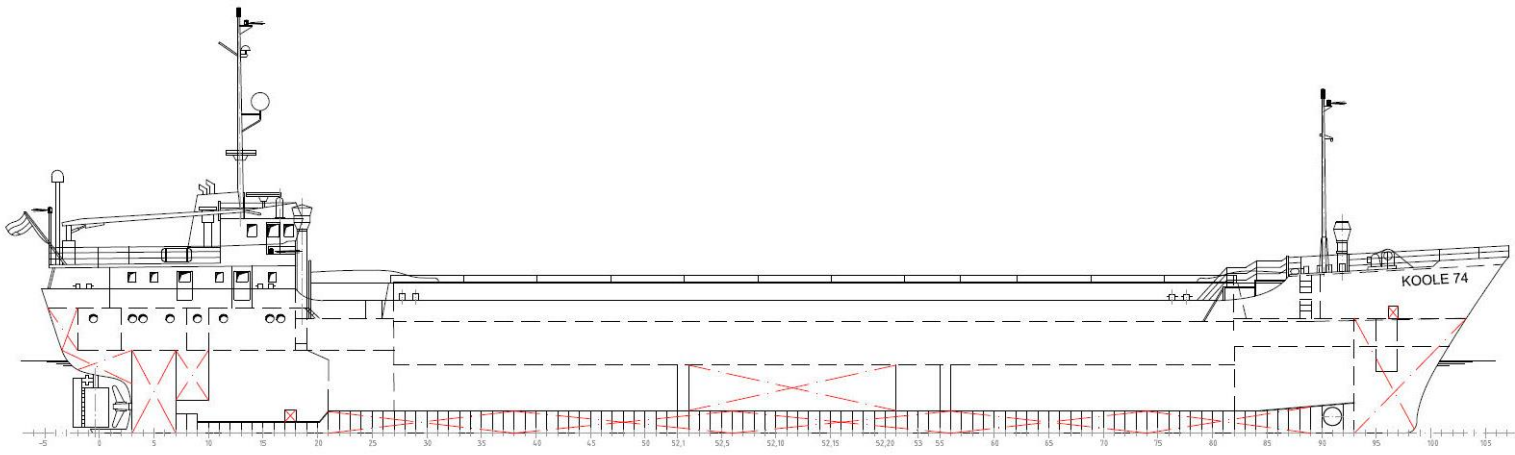
| DECK CRANE | |
|------------------------|---|
| Type Heila | HADEF Liftboy Davit crane for Rescue boat |
| Capacity | 1.000 kg |
| Auxiliary marine crane | Alpha One OMT1-112M4 |

| TANK CAPACITY | |
|---------------------------|------------------------|
| Fuel Oil | 80,0 m ³ |
| Fresh Water | 20,0 m ³ |
| Lube Oil | 1,5 m ³ |
| Hydraulic Oil | 1,0 m ³ |
| Dirty Oil | 3,0 m ³ |
| Sewage | 2,0 m ³ |
| Fuel Oil Transfer Pump | 5,2 m ³ /h |
| Fresh Water Transfer Pump | 15,5 m ³ /h |

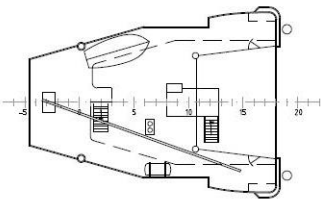
| WATERBALAST | |
|------------------------|-----------------------|
| Water Ballast Capacity | 579,67 m ³ |
| Ballast Pump Capacity | |

| DECK EQUIPMENT | |
|-----------------------|----------------------------|
| Forward Mooring Winch | HATLAPA EUTERSEN 120.31 / |
| Aft Mooring Winch | HATLAPA UETERSEN MA16 3134 |

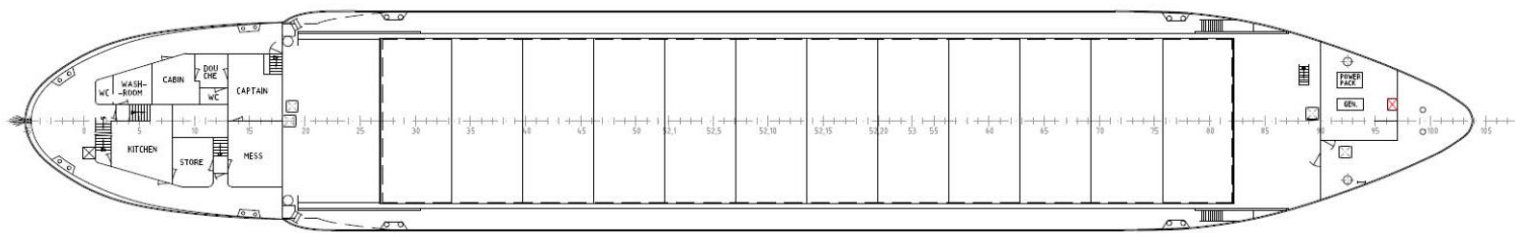
| ACCOMMODATION | |
|-----------------|-----|
| Persons | 6 |
| Single Cabin | 6 |
| Double Cabin | 0 |
| Air Conditioned | Yes |
| Heated | Yes |



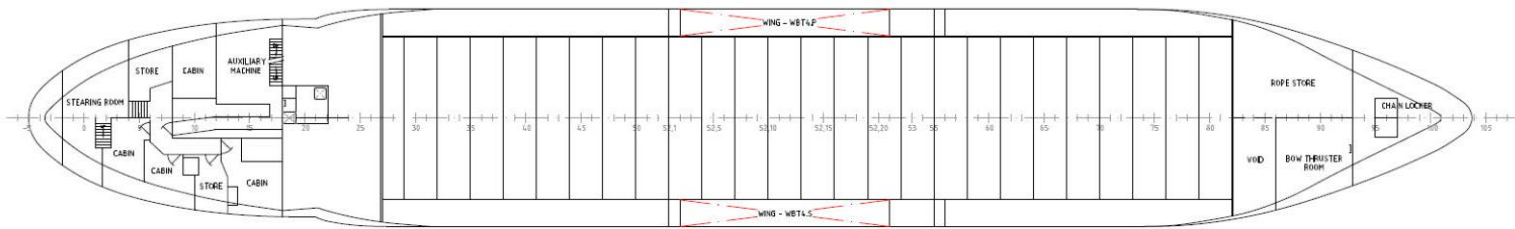
BOOTSDECK



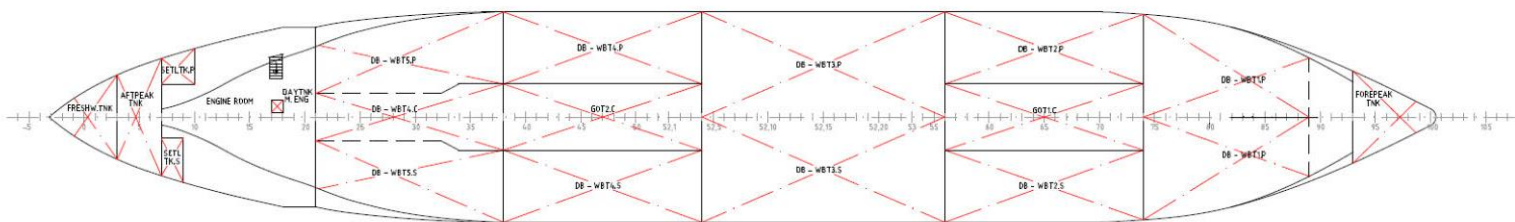
MAIN DECK



TWEEN DECK



TANK TOP



Ballast Water

| Compartment | Location (Fr. No) | Capacity [m3] | Centre of gravity | | |
|---------------|-------------------|---------------|-------------------|---------|---------|
| | | | LCG [m] | VCG [m] | TCG [m] |
| Forepeak | 93 - FWD | 65,2 | 64,263 | 3,774 | 0,000 |
| DB - WBT1.P | 74 - 89 | 38,5 | 55,988 | 0,581 | -2,039 |
| DB - WBT1.S | 74 - 89 | 34,9 | 55,988 | 0,581 | 2,039 |
| DB - WBT2.P | 56 - 74 | 34,6 | 47,230 | 0,590 | -3,311 |
| DB - WBT2.S | 56 - 74 | 34,6 | 47,230 | 0,590 | 3,311 |
| DB - WBT3.P | 52.2 - 52.21 | 97,5 | 36,319 | 0,577 | -2,451 |
| WING - WBT3.P | 52.2 - 52.21 | 34,380 | 2,108 | -4,743 | |
| DB - WBT3.S | 52.4 - 56 | 97,5 | 36,319 | 0,577 | 2,451 |
| WING - WBT3.S | 52.2 - 52.21 | 34,380 | 2,108 | 4,743 | |
| DB - WBT4.P | 38 - 52.4 | 35,2 | 25,319 | 0,594 | -3,272 |
| DB - WBT4.S | 38 - 52.4 | 35,2 | 25,319 | 0,594 | 3,272 |
| DB - WBT5.P | 21 - 38 | 30 | 16,060 | 0,607 | -2,863 |
| DB - WBT4.C | 21 - 38 | 25,5 | 16,033 | 0,55 | 0,000 |
| DB - WBT5.S | 21 - 38 | 30 | 16,060 | 0,607 | 2,863 |
| Aftpeak | 3 - 7 | 20,97 | 2,328 | 3,012 | 0,000 |

Fuel Oil

| Compartment | Location (Fr. No) | Capacity | Centre of gravity | | |
|-----------------------------|-------------------|----------|-------------------|---------|---------|
| | | | LCG [m] | VCG [m] | TCG [m] |
| GOT1.C | 56 - 74 | 36,3 | 47,300 | 0,550 | 0,000 |
| GOT2.C | 38 - 52.4 | 36,3 | 25,300 | 0,550 | 0,000 |
| Settling Tank.P | 7 - 10 | 3,25 | 4,205 | 3,403 | -2,469 |
| Settling Tank.S | 7 - 9 | 3,5 | 3,880 | 3,289 | 2,060 |
| Daytank Main Engine | 17 - 18 | 1 | 9,075 | 0,950 | 0,875 |
| Daytank Emergency Generator | 96 - 97 | 0,52 | 64,625 | 5,925 | 1,450 |

Fresh Water

| Compartment | Location (Fr. No) | Capacity [m3] | Centre of gravity | | |
|------------------|-------------------|---------------|-------------------|---------|---------|
| | | | LCG [m] | VCG [m] | TCG [m] |
| Fresh Water Tank | AFT - 3 | 12,3 | 0,669 | 4,405 | 0,000 |

M.V. KOOLE 74

KMS bv

Vijfhuizerdijk 110
2141 BD Vijfhuizen
The Netherlands
+31 (0)23 558 19 37
info@koole.eu
www.koole.eu