

## WORK BARGE K9128 WITH 200 OR 300 TON CRAWLER CRANE

### *Multipurpose lifting solution*

The K9128 is a flattop work barge with a large open deck space that is perfectly suitable for carrying heavy loads and is surrounded with a bin wall that allows for the secured stacking of materials. Installed on the barge is a strong 4 point mooring system for safe and secure mooring capabilities. With its shallow draft it can easily operate in near coastal waters and with its stable seagoing behavior it can also perfectly be deployed in further offshore operating area's as well.

The K9128 features the ability to fill gas and oxygen bottles used for cutting operations since it's outfitted with an oxygen factory and gas bottle filling station.

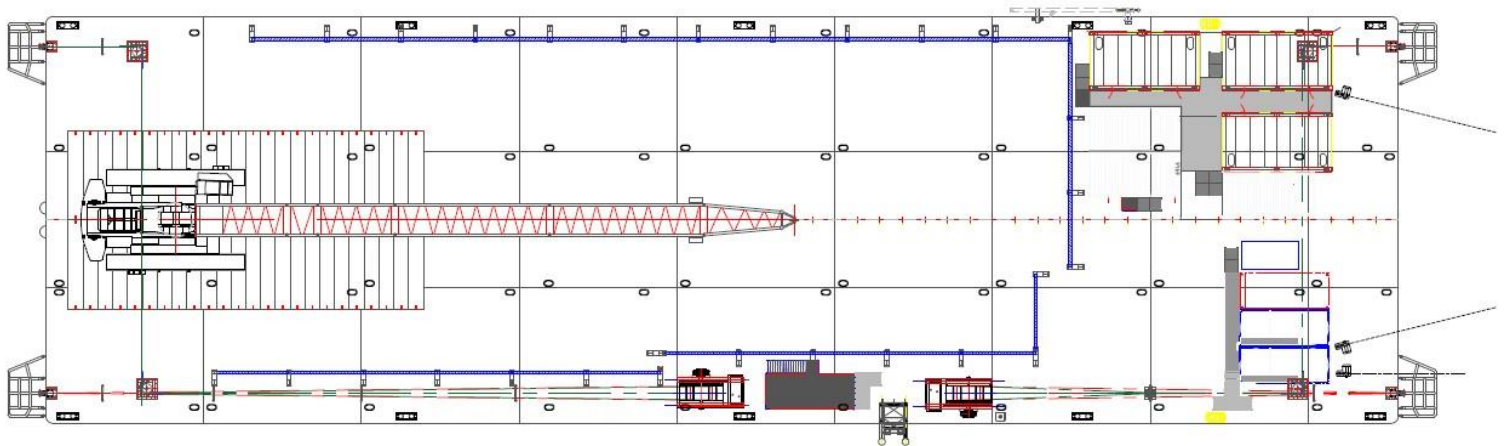
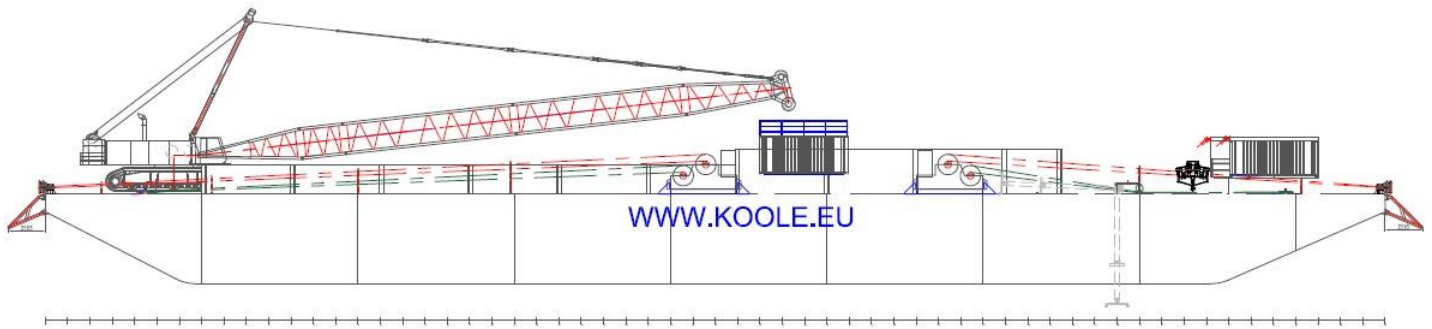
The K9128 is currently equipped with a HS8200 HD crawler crane however, it can also be equipped with a HS8300 HD depending on heavy lifting requirements of the project.

**BARGE K9128**

Flag & Port of registry	Panama
IMO number & Call sign	N/A & 3E3892
Classification society	INSB Class
Year build	2007
Length overall	91,44 [m]
Breadth	27,44 [m]
Depth	6,10 [m]
Draft	1,00 – 4,87 [m]
Deck strength	15 [ts/m <sup>3</sup> ]
Dwt	9.000 [t]
GT / NT	3.923 [t] / 1.176 [t]

**DECK EQUIPMENT**

- 4 point mooring system
- 4 winches of each 35 [t]
- 5x5 tons delta flipper anchors
- 12 persons accommodation
- Mess room, change room, sanitary and offices.
- 20m<sup>3</sup> Fuel storage
- 25m<sup>3</sup> Fresh Water storage
- Food storage
- 2x generator 230/400v



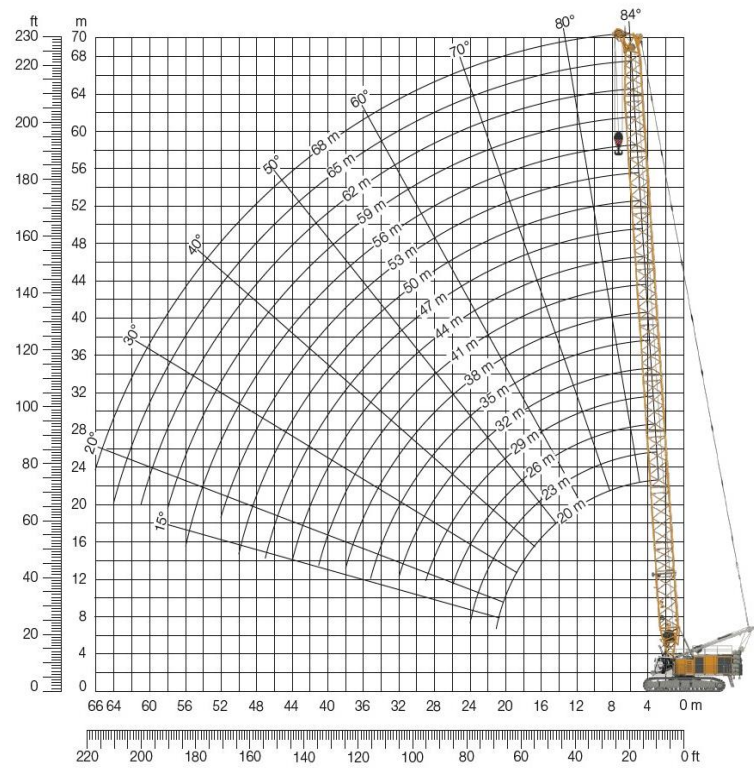
### CRANE LIEBHERR HS 8200 HD

Crawler crane

Maximum lifting capacity 200t

Minimum boom length 20.00 m

Maximum boom length 68.00 m



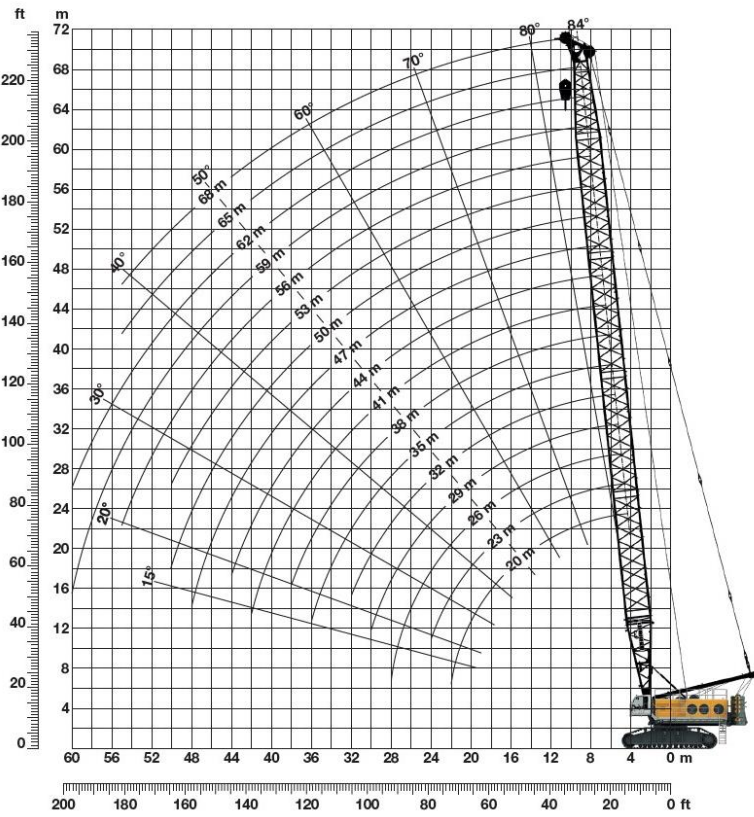
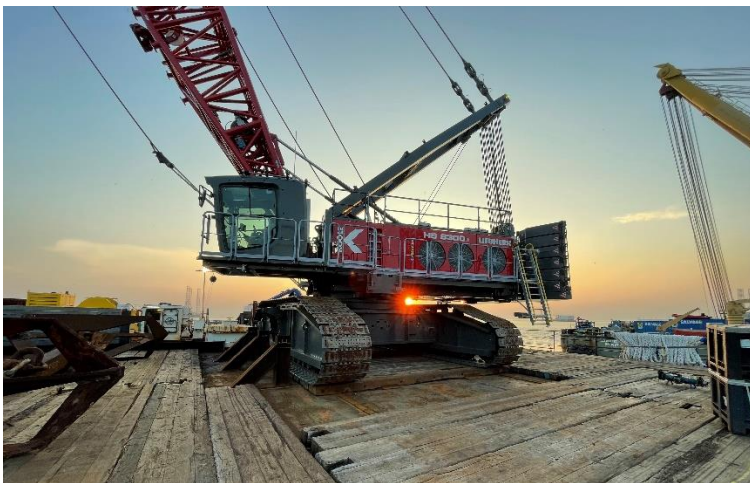
### CRANE LIEBHERR HS 8300 HD

Crawler crane

Maximum lifting capacity 300t

Minimum boom 31.00 m

Maximum boom length 84.20 m



**WORK BARGE K9128  
WITH 200 OR 300 TONS  
CRAWLER CRANE**  
*Multipurpose lifting solution*

**KMS bv**

Vijfhuizerdijk 110  
2141 BD Vijfhuizen  
The Netherlands  
+31 (0)23 558 19 37  
info@koole.eu  
www.koole.eu