



K4512 & K4512-2 *Heavy Duty Deck Cargo Pontoons*

The Damen Stan Pontoon is a heavy constructed modern non-propelled Pontoon for deck cargo built to standard design. The Damen Stan Pontoon is provided with a bow ramp and can be used for various operations on inland waters, in harbors, estuaries and coastal waters. The Pontoon is designed for the transport of general cargo on deck.

Also 6 cargo tanks with discharge pump / filling station is provided for the transport of MDO.

The construction of the Pontoon is based on a longitudinal framing system in combination with a transverse web frame system. Due to the utilization of the Pontoon, a special strong construction with extra local strengthening in bottom fore and aft ship, deck and sheer strake and a heavy welding system are used. The hull is divided into watertight compartments according to the General Arrangement Plan.

SPECIFICATIONS

Length mld.	45,00 m
Beam mld	12,00 m
Depth mld	2,50 m
Draught max.	1,87 m
Deadweight max. (incl. cargo bin)	655 T
Cargo tank capacity (97%)	545 m ³
Cargo bin volue	375 m ³
Uniform load on cargo deck	12 ton/m ²
Flag	Netherlands & Panama
Port of Registry	Amsterdam & Panama

CLASSIFICATION

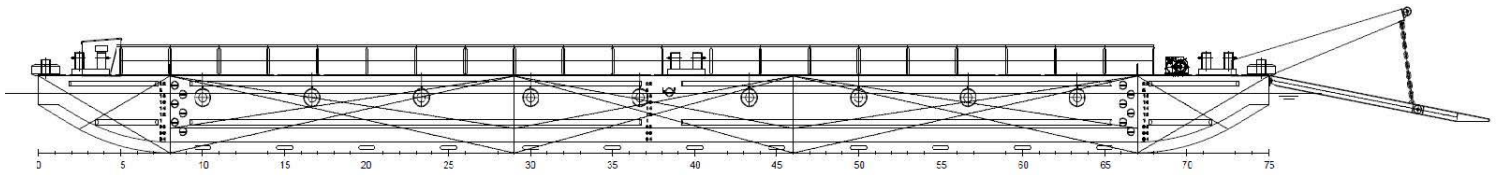
The hull construction meets the classification rules of Bureau Veritas for non-propelled and unmanned vessels with the following notation:

Class I X Hull	
Pontoon / Special service	Fuel Oil Barge
Flash point	> 60 degrees
Coastal area's	(max. 20 NM offshore)
Strength bottom	

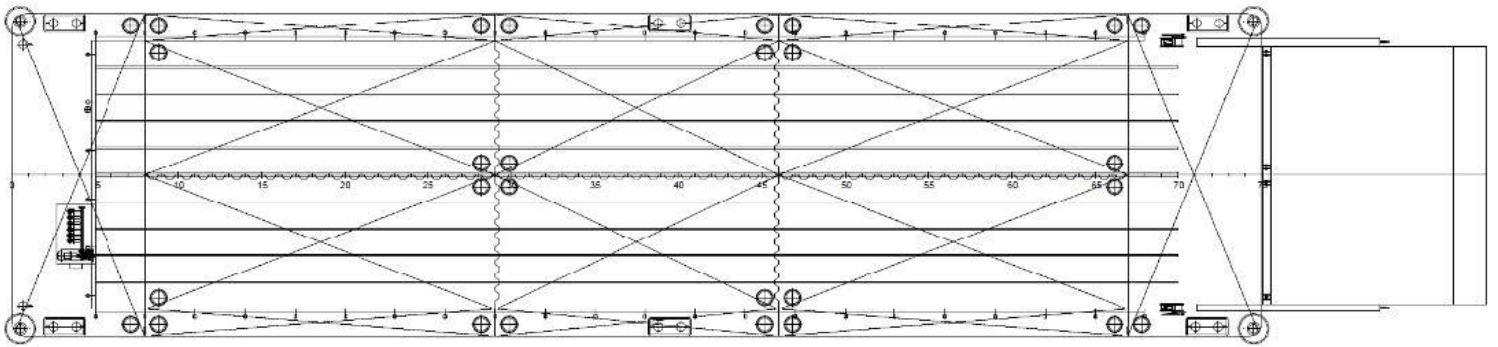
ADDITIONAL SPECIFICATION

Ro-Ro Ramp
Fuel Oil Barge

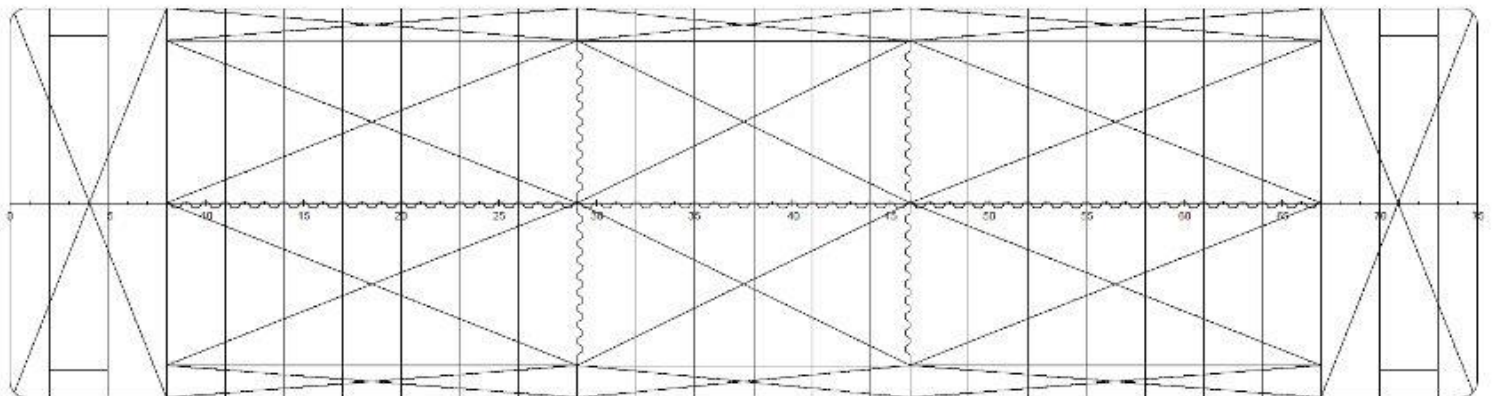
SIDE VIEW



TOP VIEW



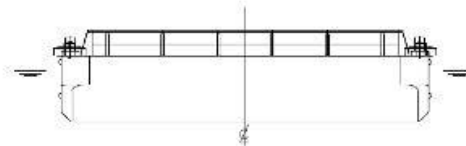
VIEW BELOW MAIN DECK



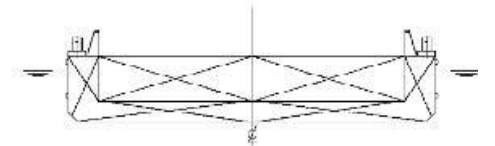
FRONT VIEW



AFT VIEW



CROSS SECTION



K4512 & K4512-2

Heavy Duty Deck Cargo Pontoons

KMS bv

Vijfhuizerdijk 110
2141 BD Vijfhuizen
The Netherlands
+31 (0)23 558 19 37
info@koole.eu
www.koole.eu