



WORK BARGE H-283

Multipurpose lifting solution

The H-283 is a flattop work barge with a large open deck space that is perfectly suitable for carrying heavy loads and an environmental containment wall surrounds the barge for containment purposes. The H-283 features the ability to fill gas and oxygen bottles used for cutting operations since it's outfitted with an oxygen factory and gas bottle filling station.

With its shallow draft it can easily operate in near coastal waters and with its stable seagoing behavior it can also perfectly be deployed in further offshore operating area's as well. Installed on the barge is a strong 4 point mooring system for safe and secure mooring capabilities.

The H-283 is currently equipped with a HS895 HD crawler crane however, it can also be equipped with a HS8200 HD or HS8300 HD crawler crane depending on heavy lifting requirements of the project.

BARGE H-283

IMO9316831

Length overall	84.00 [m]
Breadth	20,30 [m]
Breadth overall	21.30 [m]
Depth	5.50 [m]
Draft	2.00 [m]
Dwt	5.364 [t]
GT / NT	2.473/741

DECK EQUIPMENT

Barge fitted for ballasting,
equipped with pump rooms

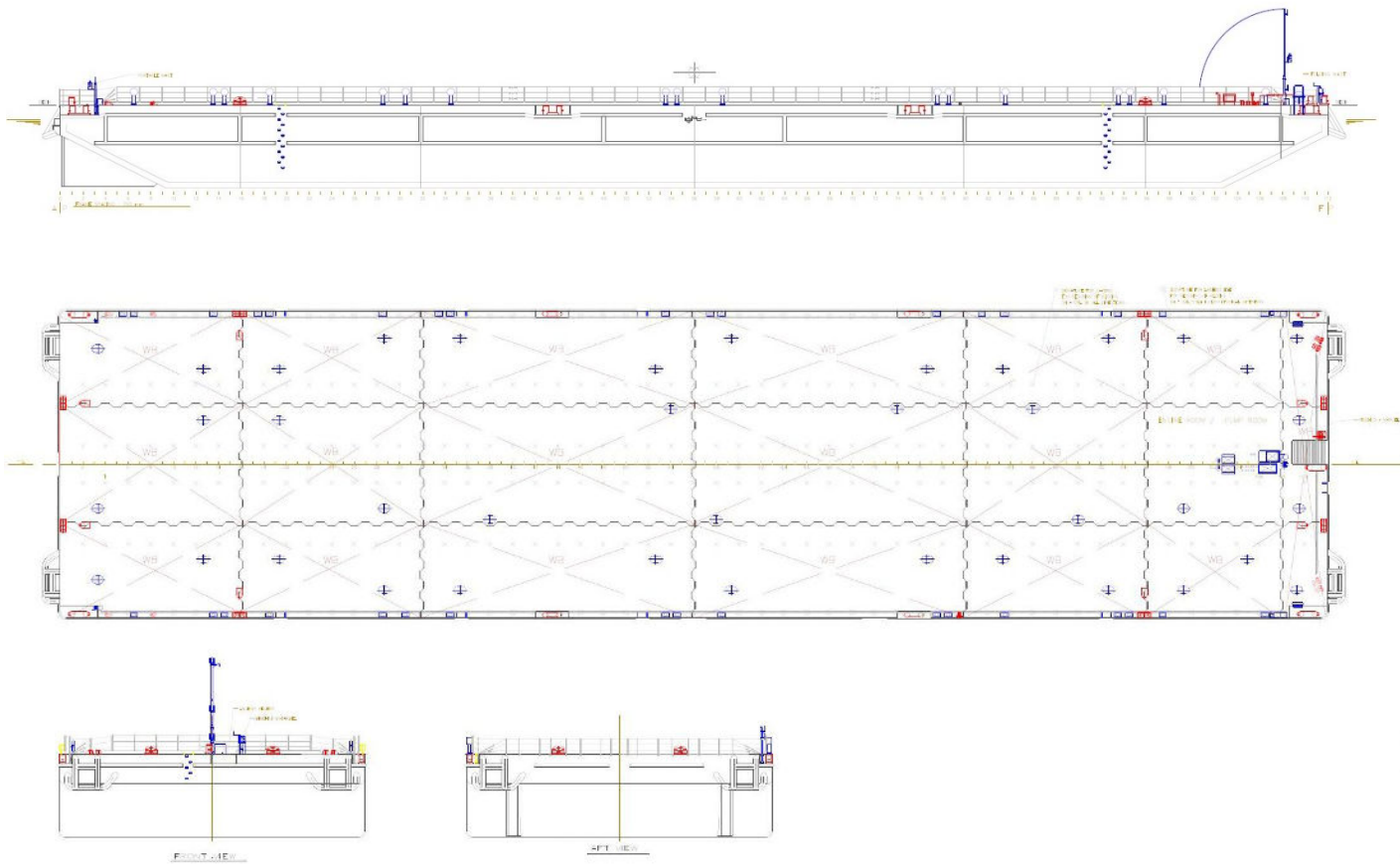
4 point mooring system

4 winches of each 40 [t]

5t delta flipper anchors

Daytime accommodation

Fuel storage on board +
generator 230/400v

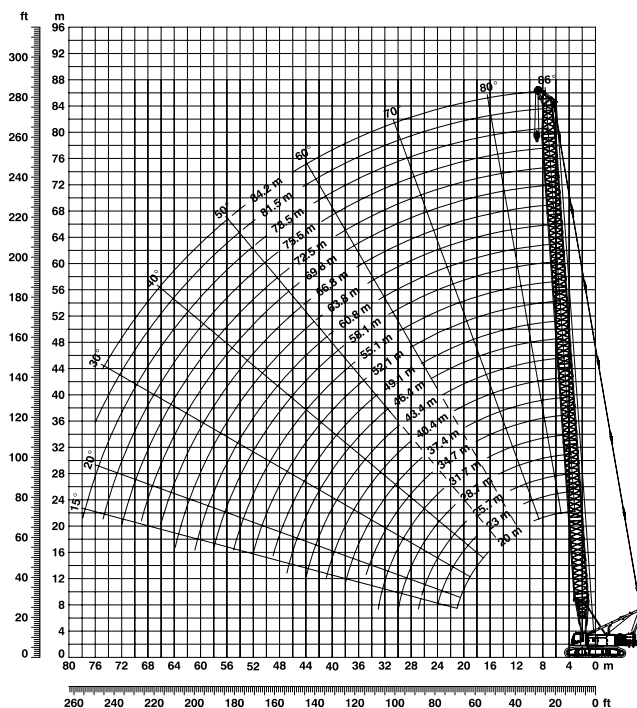
**CRANE LIEBHERR HS 895 HD**

Crawler crane

Maximum lifting capacity 200t

Minimum boom length 20.00 m

Maximum boom length 84.20 m



**WORK BARGE H-283
WITH 200 OR 300 TON
CRAWLER CRANE**
Multipurpose lifting solution

KMS bv

Vijfhuizerdijk 110
2141 BD Vijfhuizen
The Netherlands
+31 (0)23 558 19 37
info@koole.eu
www.koole.eu