



## AHTS KOOLE 53

The KOOLE 53 is an anchor handling tug supply vessel (AHTS). With its excellent seakeeping behavior and her maneuverability, the KOOLE 53 has outstanding towing characteristics. The KOOLE 53 has a bollard pull of 50 tons, classed by RINA with an unrestricted sailing area.

The KOOLE 53 is manned with an experienced crew, equipped with large variety of equipment, in combination with the extreme large bunker capacity of 550.000 liters, very economic engines, seaworthiness hull, and the twin fixed propellers in nozzles, gives the vessel maximum reach while towing and an excellent seakeeping behavior. With its multi-purpose design and outstanding towing characteristics, the KOOLE 53 can be used for worldwide operations such as, but not limited to, single and double towing, anchor handling, anchor recovery, rig move assistance, salvage assistance, wreck removal, harbor towage, escorting and deck and/or cargo transportation.

The KOOLE 53 is equipped with a double drum towing- and anchor handling winch, deck crane and Shark jaws, Towing pins.

Accommodation on board is provided for 37 persons.

GENERAL	
Name	KOOLE 53
Type of vessel	Anchor Handling Tug Supply / Utility Vessel
Class	RINA ✕ A1(E) ✕ Offshore Support Vessel Unrestricted Navigation + AMS
Flag	The Netherlands
Port of Registry	Rotterdam
Year Built	2012
Callsign	PBZS
IMO Number	9646778
MMSI	245081000

DIMENSIONS	
Length Overall	52,80 meter
Breath Overall	13,20 meter
Depth at Sides	5,20 meter
Minimum Draft	3,00 meter
Operating Draft	4,00 meter
Maximum Draft	4,50 meter
Minimum Airdraft	25,50 meter
Maximum Airdraft	25,50 meter
Gross Tonnage	1.159 GT
Net Tonnage	347 NT
Clear deck area	275 m <sup>2</sup>
Cargo capacity	16x 1 TEU
Cargo deck load	7,0 tons per m <sup>2</sup>

TANK CAPACITY	
Fuel Oil	550,00 m <sup>3</sup>
Fresh Water	360,00 m <sup>3</sup>
FiFi foam tanks	17,00 m <sup>3</sup>
Lube Oil	6,210 m <sup>3</sup>
Dirty Oil	4,400 m <sup>3</sup>
Sludge	1,200 m <sup>3</sup>
Sewage	17,000 m <sup>3</sup>
Fuel Oil Transfer Pump	100 m <sup>3</sup> /h @ 75m head
Fresh Water Transfer Pump	100 m <sup>3</sup> /h @ 75m head

NAUTICAL AND COMMUNICATION EQUIPMENT	
Sea areas	A1+A2+A3
Radar system	JRC JMA-5310-6-MKII / Koden MDC-2910P
SSB	3x Sailor type SP3520 Radar
Chart system	ECDIS Dual system 21.3" Danelec Marine
Autopilot	Anschütz type NautoPilot NP60
Fleetbroadband	Sailor type 150
Echo sounder	JRC type JFE-380
GPS	Koden type KGP-920D
AIS	Furuno FA-150
Magnetic Compass	Lilley & Gillie type MK2000S
Gyro Compass	Anschuetz type standard 22
Dopplerlog	Benmarin type Anthea speedlog
V-Sat	Intellian

PERFORMANCES	
Bollard Pull	50,0 tons
Maximum Speed	11,5 knots
Economic Speed	9,00 knots

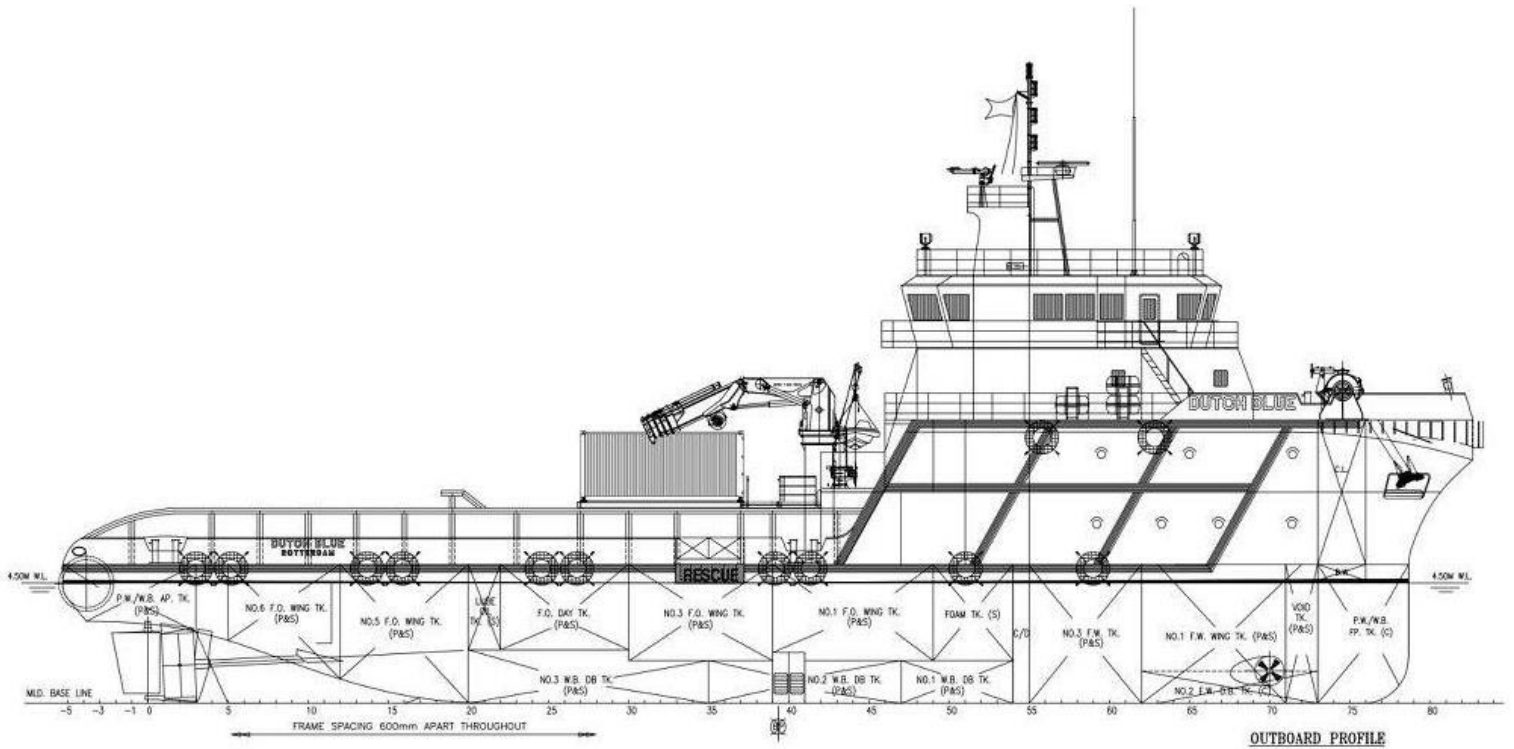
PROPULSION SYSTEM	
Main Engines	2x Wärtsilä 8L20
Total Power	3.200 kW = 4.292 BHP @ 1.000 rpm
Gearboxes	Hangzhou SBZ 600
Propulsion	Twin fixed propellers in nozzles
Propellor Diameter	2,3 meter
Bowthruster	SCHOTTEL STT 170 FP Rated power 350KW

AUXILIARY EQUIPMENT	
Generator sets	3x Cummins
Capacity	3x 315 kW / 400 Volt
Emergency Generator	1x Cummins 65 kW
Hydraulic set	MEP Systems MEP-HPU-2x90+1x7.5
Fresh Water Maker	5 m <sup>3</sup> / 2,4 m <sup>3</sup> (24hrs)
Gasoil separator	Mitsubishi SJ10G

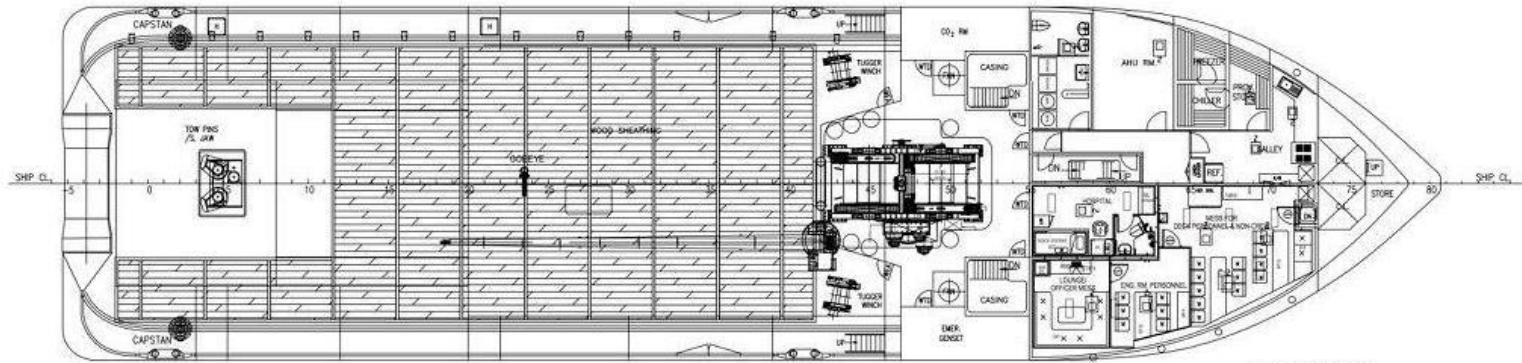
DECK CRANE	
Type Heila	Promac
Capacity	5,9 tons @ 15,0 meters

DECK EQUIPMENT	
Towing Winch	Hydraulic driven, waterfall type c/w +spooling device towing drum
Line Pull	Low speed 100 tons @ 6 m/min (1st speed) Mid speed 45 tons @ 12 m/min (2nd speed) High speed 20 tons @ 24 m/min (3rd speed)
Brake holding	180 tons
Drums	2x 1.000 meters x 52 mm
Work wire	Storage reel winch 200 meters x 52 mm
Tugger Winches	2x Electro-hydraulic driven, 1x 250m @ 22mm Line pull 10 tons @ 15 m/min
Shark Jaws / Towing Pins	Wire 50mm – 75mm Chain 28mm – 75mm Capacity SWL 200 tons
Anchor Winch	Electro-hydraulic driven, 6 tons pull Chain dia 34 mm, U2. Speed 12 m/min
Stern Roller	5m length x 1.6m diameter, SWL 200 tons
FiFi	1.200 m <sup>3</sup> /h @ 120m head
Firefighting monitors	2x 600 m <sup>3</sup> /h

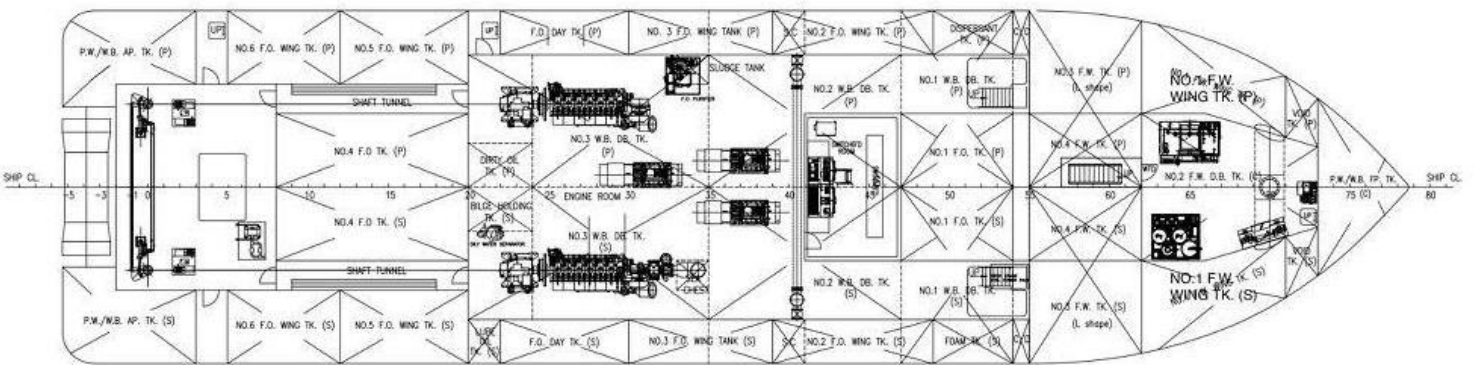
ACCOMMODATION	
Persons	33
Cabins	3 x 1 man cabin 3 men 3 x 2 man cabin 6 men 6 x 4 man cabin 24 men
Hospital	1 men
Air Conditioned	Fully Air-conditioned, Ambient -10°C - 45°C



OUTBOARD PROFILE

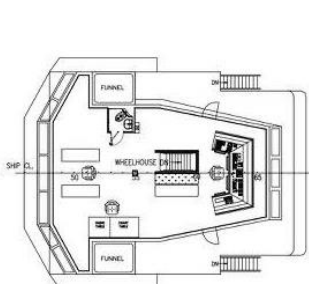


MAIN DECK PLAN

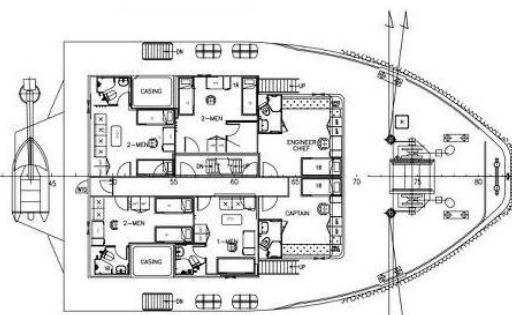


dimension: do 3.3m, height 3.5m

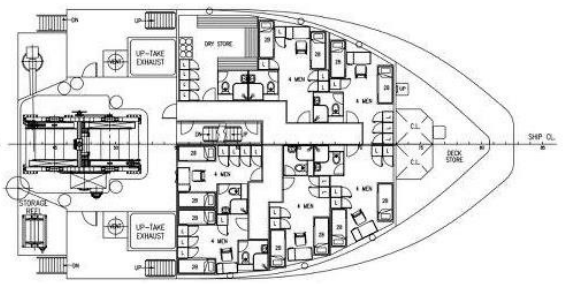
BELOW MAIN DECK PLAN



NAVIGATION BRIDGE DECK



UPPER FORECASTLE DECK



FORECASTLE DECK

# AHTS KOOLE 53

**KMS bv**

Vijfhuizerdijk 110  
2141 BD Vijfhuizen  
The Netherlands  
+31 (0)23 558 19 37  
[info@koole.eu](mailto:info@koole.eu)  
[www.koole.eu](http://www.koole.eu)