



K-4512

Heavy Duty Deck Cargo Pontoon

K-4512

Heavy Duty Deck Cargo Pontoon

SPECIFICATIONS

Length mld.	45,00 m
Beam mld	12,00 m
Depth mld	2,50 m
Draught max.	1,87 m
Deadweight max. (incl. cargo bin)	655 T
Deck load	12 T /m ²
Flag	St. Vincent and the Grenadines
Port of Registry	Kingstown

Classification

The hull construction meets the classification rules of Bureau Veritas for non-propelled and unmanned vessels with the following notation:

Class I X Hull
 Pontoon / Special service - Fuel Oil Barge
 Flash point > 60 degrees
 Coastal area's (max. 20 NM offshore)
 Strength bottom

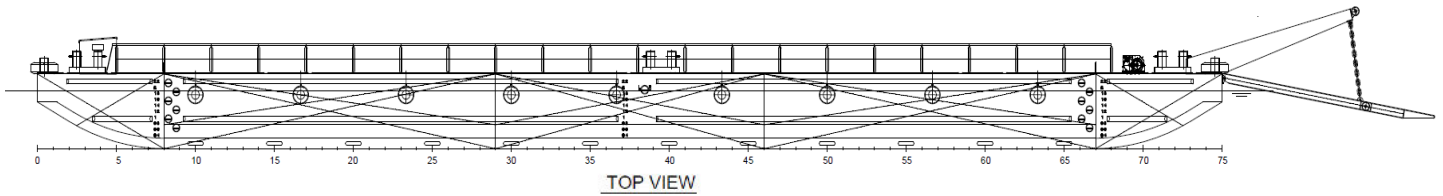
Additional specification

- Ro-Ro Ramp
- Fuel Oil Barge

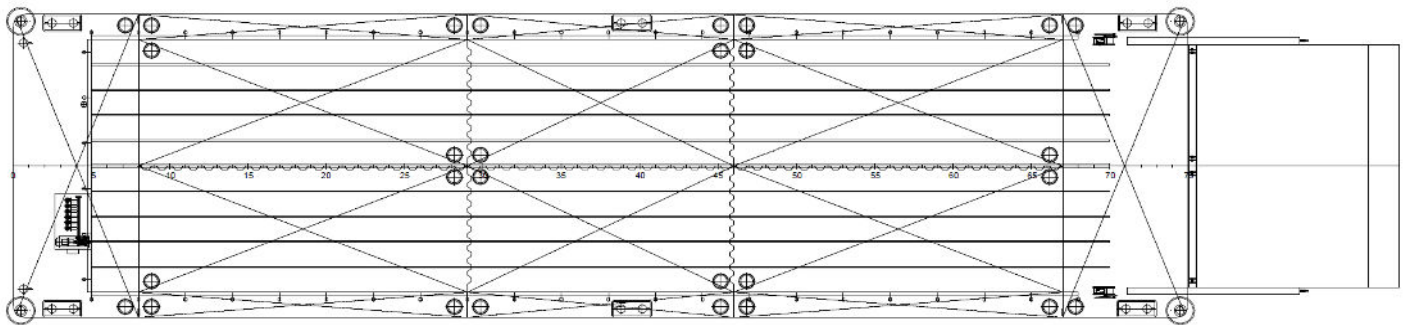
Lay-out

The Damen Stan Pontoon is a heavy constructed modern non-propelled Pontoon for deck cargo built to standard design. The Damen Stan Pontoon is provided with a bow ramp and can be used for various operations on inland waters, in harbours, estuaries and coastal waters. The Pontoon is designed for the transport of general cargo on deck. Also 6 cargo tanks with discharge pump / filling station is provided for the transport of MDO. The construction of the Pontoon is based on a longitudinal framing system in combination with a transverse web frame system. Due to the utilisation of the Pontoon, a special strong construction with extra local strengthening in bottom fore and aft ship, deck and sheer strake and a heavy welding system are used. The hull is divided into watertight compartments according to the General Arrangement Plan.

SIDE VIEW

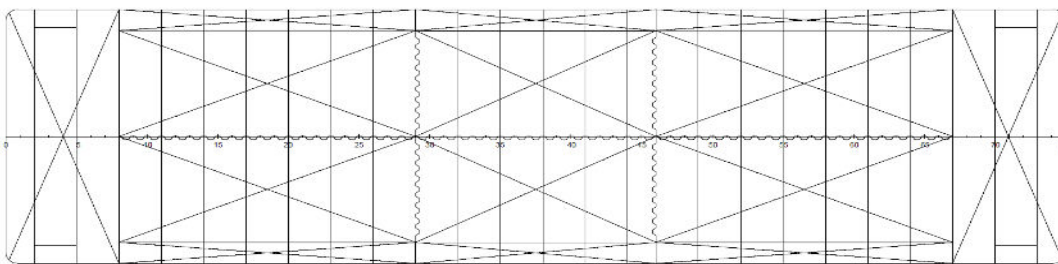


TOP VIEW

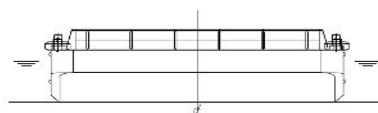


VIEW BELOW MAIN DECK

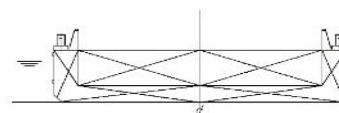
**Damen
Stan Pontoon® 4512**



FRONT VIEW



AFT VIEW



CROSS SECTION

Main dimensions (approx.)	
Length mld	45,00 m
Breadth mld	12,00 m
Depth mld	2,50 m
Draught max.	1,87 m
Deadweight max. (incl. cargo bin)	655 ton
Cargo tank capacity (97%)	545 m ³
Cargo bin volume	375 m ³
Uniform load on cargo deck	12 ton/m ²



DAMEN		DAMEN SHIPYARDS GORINCHEM	
Infransmanlaan 100, 4413 CA Gorinchem, The Netherlands		phone: +31 (0) 183 43 00 11	
E-mail: info@damen.nl		www.damen.nl	
General Arrangement			
Format	A1	Project No.	Stan Pontoon® 4512
Scale	1:100	Sheet	001
Units	mm	Date	2016.06.22
Drawn	P&B	Checked	H.V.L.
Approved	S.C.No.	Project Ship/Type	- Plan
Drawing ID	Stock 1	SPo 4512	Mk1-GA
IFS Doc No.	1877332	COPYRIGHT DAMEN SHIPYARDS GROUP	

K-4512

Heavy Duty Deck Cargo Pontoon

KOOLE bv

Vijfhuizerdijk 110
2141 BD Vijfhuizen
The Netherlands
+31 (0) 23 558 19 37

info@koole.eu
www.koole.eu

KOOLE nv

Vaartkaai 51
2170 Antwerp
Belgium
+32 (0) 3 475 07 83

info@koole.be
www.koole.be